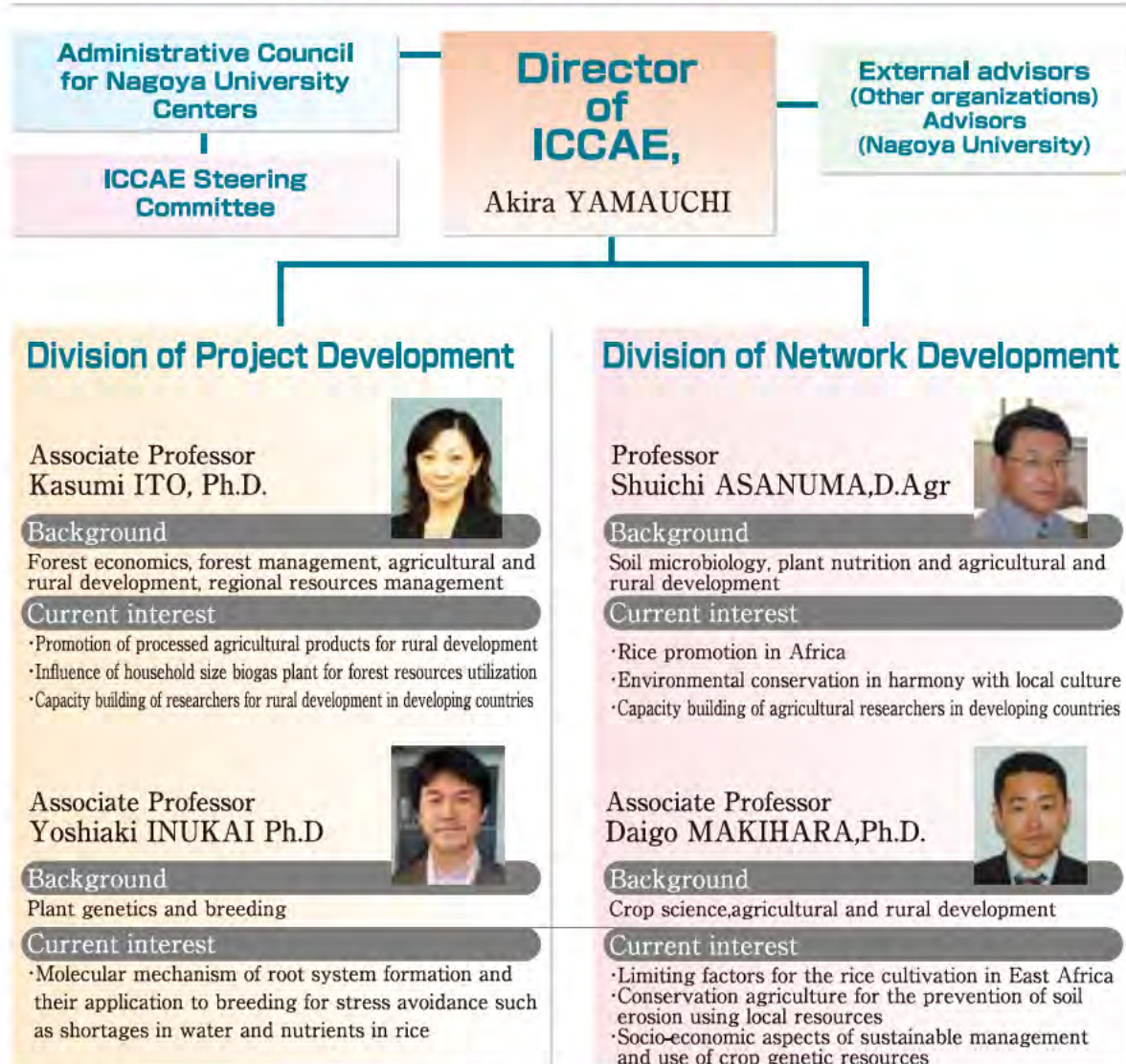


Organization and Staff



ICCAE has two positions available for visiting professors. One is for a Japanese visiting professor (one-year tenure), and another is for a foreign visiting professor/research fellow (three- to twelve-months tenure). Additionally, ICCAE can recruit post-doctoral fellows on an irregular basis. In addition, ICCAE appoints collaborative researchers/administrators from Nagoya University, other universities, research institutions, and international cooperation agencies in Japan.

ICCAE Steering Committee 2013

| | |
|------------------------------|---|
| Prof. Akira Yamauchi | Director of ICCAE, Nagoya University |
| Prof. Setsuo Nishino | Graduate School of Education and Human Development, Nagoya University |
| Assoc. Prof. Tadashi Sonoda | Graduate School of Economics, Nagoya University |
| Prof. Nobutaro Ban | Graduate School of Medicine, Nagoya University |
| Prof. Hiroyuki Honda | Graduate School of Engineering, Nagoya University |
| Prof. Toshiharu Tanaka | Graduate School of Bioagricultural Sciences, Nagoya University |
| Prof. Koichi Usami | Graduate School of International Development, Nagoya University |
| Dr. Seiji Hayashi | Graduate School of Environmental Studies, Nagoya University |
| Prof. Motoyuki Ashikari | Bioscience and Biotechnology Center, Nagoya University |
| Prof. Shuichi Asanuma | ICCAE, Nagoya University |
| Assoc. Prof. Kasumi Ito | ICCAE, Nagoya University |
| Assoc. Prof. Yoshiaki Inukai | ICCAE, Nagoya University |
| Assoc. Prof. Daigo Makihara | ICCAE, Nagoya University |